

ECCA SERIES
STANDARD DAMPER ACTUATOR

2 Point & 3 Point Control
20Nm

ECCA...20 (S) SERIES

ECCA standard damper actuators are specially designed and produced for applications in the HVAC Systems. Our wide range of Enyecontrols standard damper actuators has been developed to operate and position air dampers of different sizes.

PRODUCT FEATURE

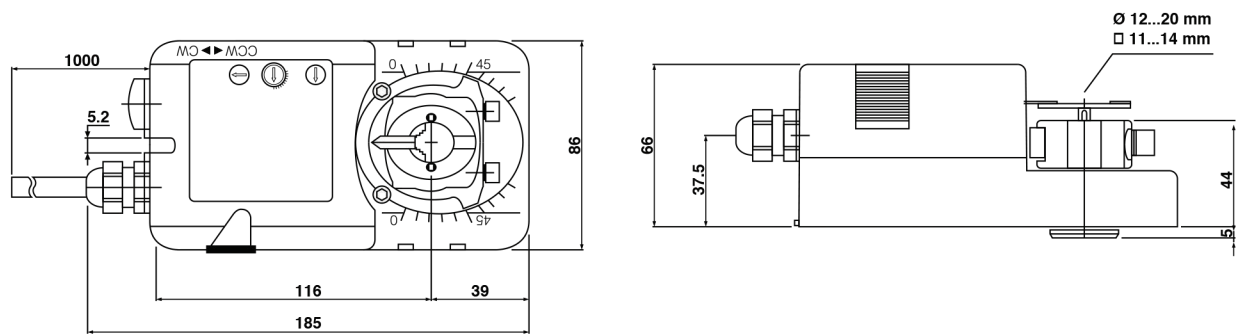


- Torque 20Nm
- Power supply AC/DC 24 V and AC 230 V
- Shaft dimensions - Ø 12...20 mm / □ 11...14 mm
- Minimum Shaft Length 40 mm
- Adjustable angle of rotation
- Selectable direction of rotation of reversing actuator
- Actuator with 1 m cable connection
- Manual Over-ride push button when required
- Optional 2 Adjustable SPDT auxiliary switches
- Collaborate with EVCB 9000 Bracket 1

MODEL SELECTION TABLE

MODEL / TYPE	TORQUE	POWER SUPPLY	RUNNING TIME	AUXILIARY SWITCH
ECCA 1-20	20 Nm	AC/DC 24 V ± 10%	100...150 sec	-
ECCA 1-20S	20 Nm	AC/DC 24 V ± 10%	100...150 sec	2 x SPDT (Adjustable)
ECCA 2-20	20 Nm	AC 230 V ± 10%	100...150 sec	-
ECCA 2-20S	20 Nm	AC 230 V ± 10%	100...150 sec	2 x SPDT (Adjustable)

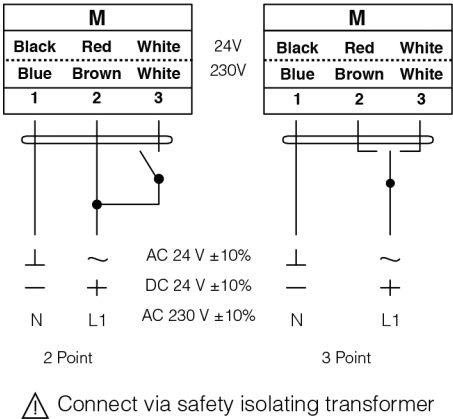
DIMENSION (mm)



TECHNICAL SPECIFICATION

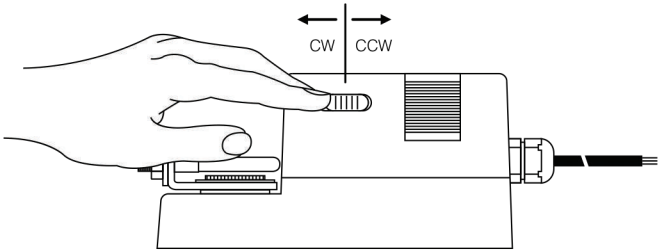
MODEL NUMBER	ECCE 1-20 (S)	ECCE 2-20 (S)
TORQUE	20 Nm	20 Nm
DAMPER SIZE	4.0 m²	4.0 m²
SHAFT DIMENSION	Ø 12...20 mm / □ 11...14 mm	Ø 12...20 mm / □ 11...14 mm
POWER SUPPLY	AC/DC 24 V ± 10%	AC 230 V ± 10%
FREQUENCY	50...60 Hz	50...60 Hz
CONTROL SIGNAL	2 & 3 point control	2 & 3 point control
POWER CONSUMPTION		
● OPERATING	8.0 W	8.0 W
● END POSITION	2.0 W	2.0 W
FOR WIRE SIZING	14.0 VA	14.0 VA
ELECTRICAL CONNECTION	1 m Cable	1 m Cable
AUXILIARY SWITCHES RATING	2 (1.5) A, AC 250 V	2 (1.5) A, AC 250 V
PROTECTION CLASS	Class III ⚡	Class II ⚡
ANGLE OF ROTATION	90° (95° mechanical)	90° (95° mechanical)
WEIGHT	1.2 Kg	1.2 Kg
LIFE CYCLE	60,000 Rotation	60,000 Rotation
SOUND LEVEL	45 dB	45 dB
IP PROTECTION	IP54	IP54
OPERATING TEMPERATURE	-20°...50° as per IEC 721-3-3	-20°...50° as per IEC 721-3-3
NON-OPERATING TEMPERATURE	-30°...+60° C / IEC 721-3-2	-30°...+60° C / IEC 721-3-2
AMBIENT HUMIDITY	5%...95% rH non condensing / EN	5%...95% rH non condensing / EN
MAINTENANCE	Maintenance Free	Maintenance Free
MODE OF OPERATION	Type I / EN 60730-1	Type I / EN 60730-1
EMC	CE & ISO 9000 EN / EEC	CE & ISO 9000 EN / EEC

WIRING DIAGRAM ECCA...20 (S)
POWER SUPPLY AC/DC 24V / AC 230V

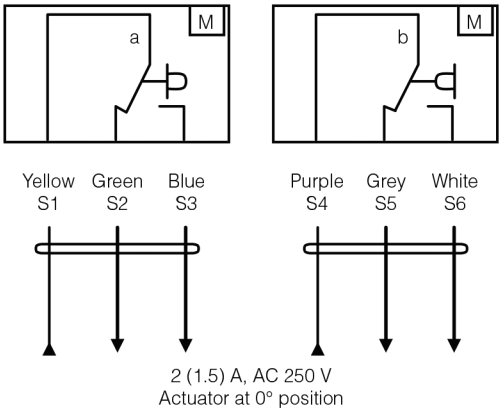


DIRECTION OF ROTATION ECCA...20 (S)

Default factory setting: CW.
Direction of rotation can be changed by toggling between CW/CCW switch on the actuator's housing.

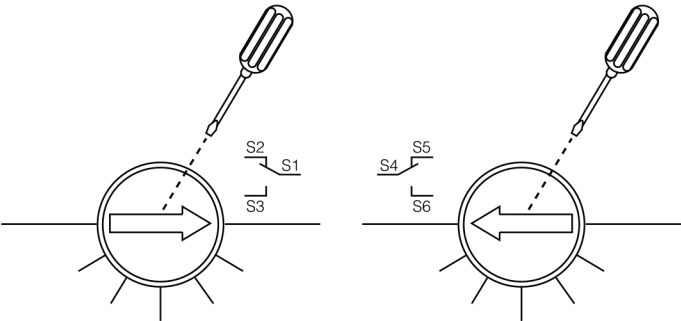


WIRING DIAGRAM ECCA...20 (S)
AUXILIARY SWITCHES

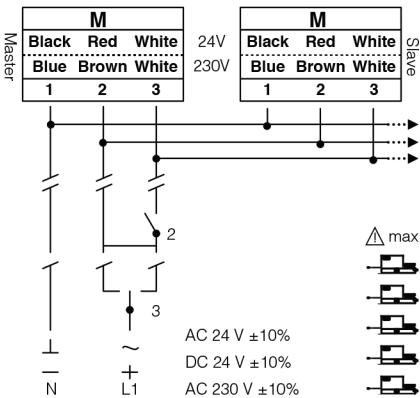


AUXILIARY SWITCH ECCA...20 (S)

Switch **a** factory-set at 5° and 85°.
The auxiliary switch can be optimally adjusted between 0°...90°.



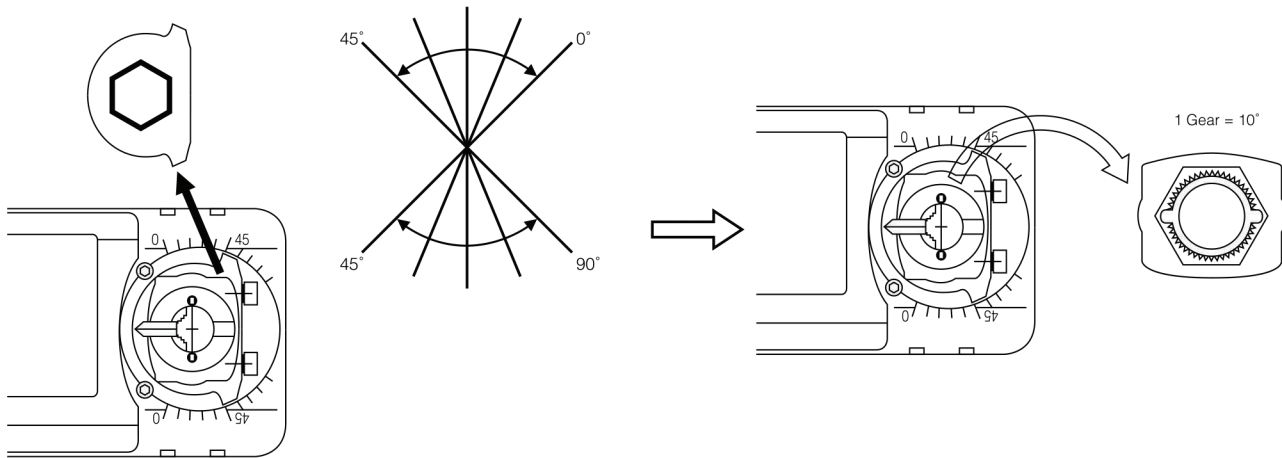
WIRING DIAGRAM ECCA...20 (S)
PARALLEL CONNECTION



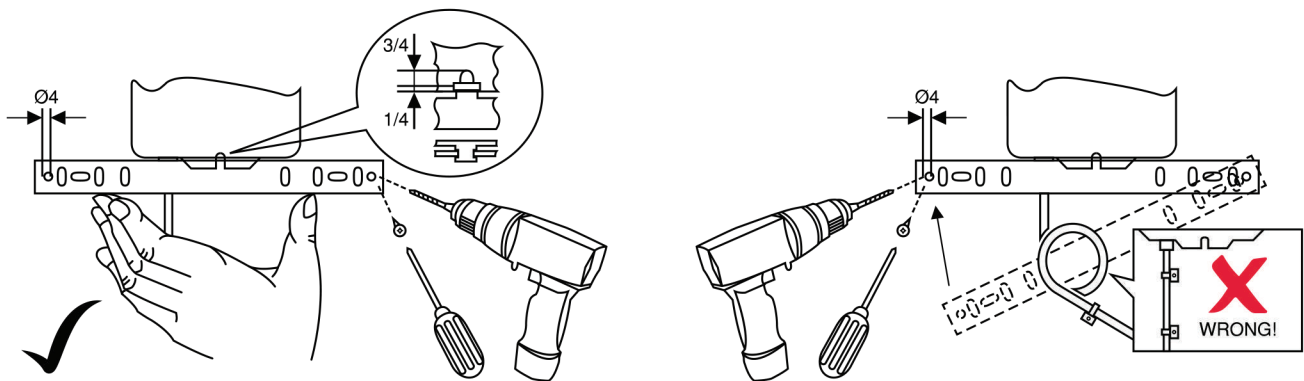
REMARKS

Parallel connection of ECCA...20 (S) actuators are limited to 5.
Power consumption must be observed.

ANGLE OF ROTATION LIMITING





INSTALLATION / MOUNTING INSTRUCTION



IMPORTANT REMARKS

For special requirement, consult your local Enyecontrols representative.

  This actuator includes electrical and electronic components and may not be disposed as household garbage. Please consider the local valid legislation.

 AC / DC 24 V: Connect via safety isolating transformer.
AC 230 V: To isolate from the main power supply, the system must incorporate a device which disconnects the phase conductor (with at least a 3mm contact gap.)